

RASTO[®] G2

The new generation of RASTO for greater efficiency:
RASTO G2's new one-sided anchoring technology
ensures fast results.



At Work For You

HÜNNEBECK 

BY BRAND SAFWAY

RASTO G2 makes anchoring flexible and easy. Single-sided anchoring is possible, as is the use of traditional DW 15, DW 20 or She-Bolt anchors.

► Product benefits

Quick

One-sided anchoring saves time when shuttering and striking

Realisation of outer corners with standard panels

Steel frame construction requires only a small number of connection elements

Easy handling

RASTO clamping lever for simple panel connections without tools

One-piece bulkhead clamp with presetting option for panel spacing

Continuous perforated grid for a wide range of applications

Connection elements can be "parked" on the formwork

Economical

Well thought-out range of panels for high system utilisation

ECOPLY plastic formwork lining ensures consistent concrete results and easy cleaning

Flexible use of different anchor systems

Strong & durable

ECOPLY plastic formwork lining with tie hole reinforcement can be used up to three times longer than wooden formwork lining

Robust galvanised steel frame reduces the need for repairs and increases the service life of the panel elements



► The RASTO® anchor for single-sided anchoring



► Flexible anchor selection possible. In this case, RASTO® anchor for single-sided and DW 15 anchor for double-sided anchoring

► Technical data

Product description	Versatile panel formwork system
Panel widths	30 45 60 75 90 240 cm
Panel heights	120 150 270 cm
Multi-purpose panels	70 x 120 70 x 270
Profile thickness	12 cm steel frame profile
Form lining	ECOPLY full plastic composite sheet Max. concrete pressure 60 kN/m ²
Form lining thickness	ECOPLY full plastic composite sheet = 15 mm
Average weight	40 to 65 kg/m ² (including connection elements)
Corrosion protection	Fully galvanised steel frame and connection elements
Relevant standards	Complies with EN 1993 DIN 18202 18216 18218
Standard connection	RASTO® aligning clamp (aligned and flush connection)
Special connection	RASTO® adjustable clamp Corner clamp RASTO® clamping lever
Inner corners	30/30 cm
Hinged corners	From 60° to max. 150° angle
Outer corners	Basic panel with outer corner clamps
Forming/stripping times	t = 0.4 – 0.6 h/m ²
Special features	<ul style="list-style-type: none"> • XXL panel 240 x 270 cm • RASTO® shaft corner adapter Panel clamp • High quality form lining on all panels

Wide range of accessories



- Safe transport of single panels and corners with higher load capacity



- The strut quick connector enables the quick connection of alignment struts



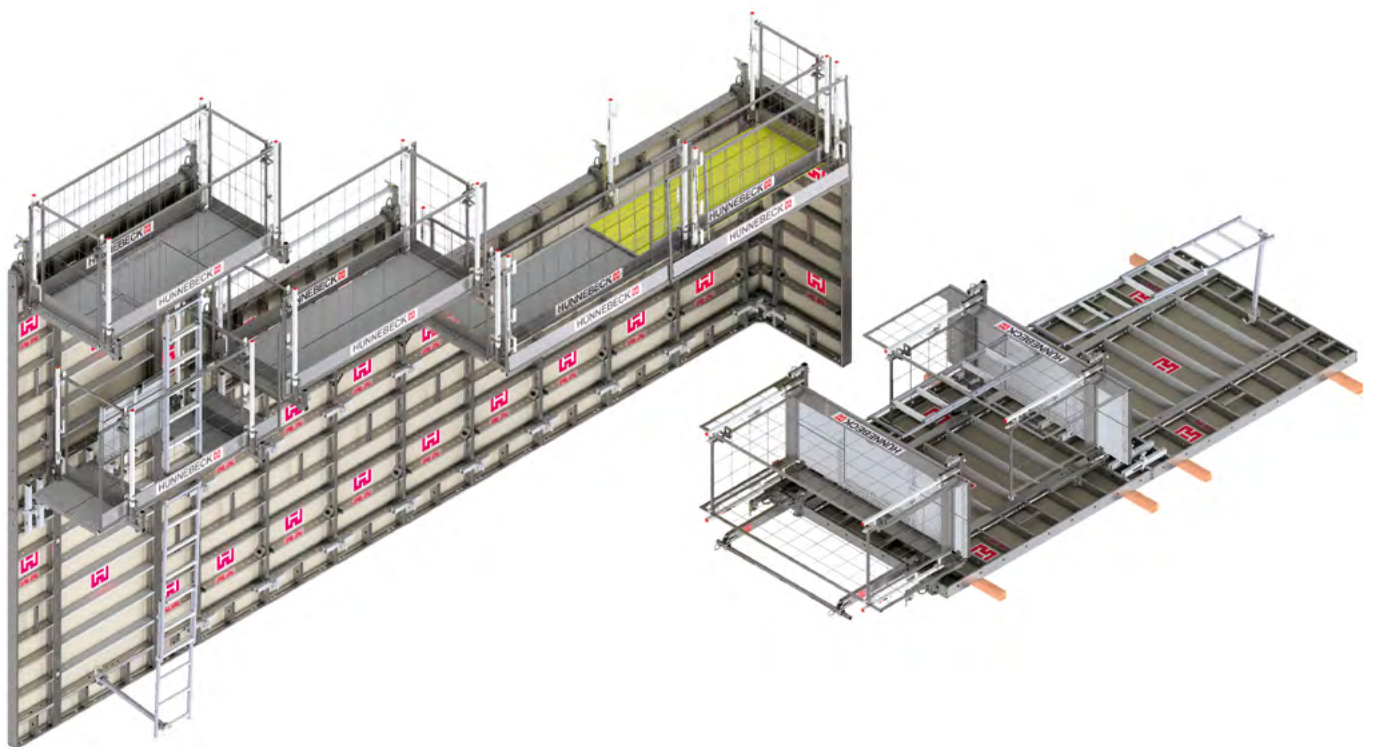
- The lattice box enables the storage of fasteners, anchor nuts, etc. It can be attached to the carriage and moved by crane. The easy handling saves considerable crane time – a clear improvement for storage and logistics



- Bulkhead clamp for tight and pressure-resistant stop-ends with only one part



► Simple and efficient mounting of the RASTO® clamping levers: no tools are required.



► The universal load class 2 formwork platform (150 kg/m²) can be mounted to the RASTO® as well as to the MANTO® formwork system. Only the respective adapters are system-specific

Application & use

- For smaller to medium-sized objects
- Crane-independent use possible

RASTO® G2
integrates with

- TOPMAX®
- Aligning struts
- Support frames