

Column formwork

The ready-to-use column formwork system is the quick and easy way to form rectangular and square columns.



At Work For You

HÜNNEBECK 

BY BRAND > SAFWAY

Easy and safe forming of columns with either rectangular or square shaped cross-sections up to a maximum pouring height of 6.60 m.

► Product benefits

Economical

Plastic-coated plywood allows for multiple use

Moving complete units with a single crane pick. All accessories are firmly secured to the element

Quick

Delivery on site in ready-to-use assemblies for a smooth and efficient forming operation

High strength – fresh concrete pressures of up to 120 kN/m² for faster pouring cycles

Easy handling

Operating clamp aids assembly and dismantling of the column forms

Cross-sections of the columns are adjustable in steady increments of 5 cm

Simple and straightforward stripping of the form in a counter-clockwise fashion

Versatile

Standard elements and stacking angles permit a height adjustment from 2.40 – 6.60 m

For best quality

Superb concrete finish and more re-uses thanks to the plastic-coated plywood



► Cross-sections of the columns are adjustable in steady increments of 5 cm

► Technical data

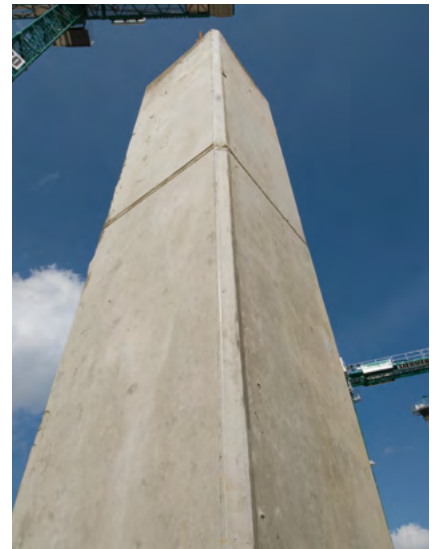
Product description	Ready-to-use formwork for columns
Panel heights	120 270 320 cm
Panel widths	60 120 cm
Column types	Squared and rectangular-shaped cross-sections possible
Adjustment range PW 60	From 15 x 15 cm to 60 x 60 cm In 5 cm increments
Adjustment range PW 120	From 50 x 50 cm to 120 x 120 cm In 5 cm increments
Adjustment setting	Perforated strip & double bolt Closing via operating clamp
Column heights	Adaptations from 2.70 m up to 6.60 m
Permissible concrete pressure	PW 60 cm = up to 120 kN/m ² PW 120 = up to 80 kN/m ²
Form lining	Plastic-coated plywood (connected from the back)
Relevant standards	Complies with EN 1993
Stacking connection	Via 2 stacking bolts per frame (M16 x 100)



◀ Column formwork assembled with the concrete pouring platform in one unit for safe concrete placement. The attachment set for safety ladders can be mounted on one side of the concreting platform, which allows a ladder to be hooked in and secured.



- ▶ Moving complete units with a single crane pick.
All accessories are firmly secured to the element



- ▶ Superb concrete finish and more re-uses thanks to the plastic-coated plywood