

# Column formwork

The ready-to-use column formwork system is the quick and easy way to form rectangular and square columns.



At Work For You

**HÜNNEBECK** 

BY BRAND SAFWAY

Easy and safe forming of columns with either rectangular or square shaped cross-sections up to a maximum pouring height of 6.60 m.

## ► Product advantages column formwork

### Economical

Plastic-coated plywood allows for multiple use

Complete column assemblies can be moved in a single crane lift – all add-on parts remain safely attached to formwork elements

### Quick

Delivery on site in ready-to-use assemblies for a smooth and efficient forming operation

High strength – fresh concrete pressures of up to 120 kN/m<sup>2</sup> for faster pouring cycles

### Easy handling

Operating clamp aids assembly and dismantling of the column forms

Cross-sections of the columns are adjustable in steady increments of 5 cm

Simple and straightforward stripping of the form in a counter-clockwise fashion

### Versatile

Standard elements and stacking angles permit a height adjustment from 2.40 – 6.60 m

### For best quality

Superb concrete finish and more re-uses thanks to the plastic-coated plywood



► Cross-sections of the columns are adjustable in steady increments of 5 cm

## ► Technical specifications column formwork

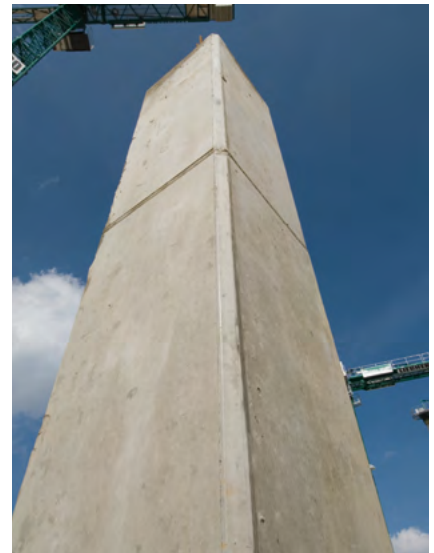
Product description	Ready-to-use formwork for columns
Column panel heights	120   270   320 cm
Column panel widths	60   120 cm
Column types	Squared and rectangular-shaped cross-sections possible
Adjustment range PW 60	From 15 x 15 cm to 60 x 60 cm In 5 cm increments
Adjustment range PW 120	From 50 x 50 cm to 120 x 120 cm In 5 cm increments
Adjustment setting	Perforated strip & double bolt Closing via operating clamp
Column heights	Adaptations from 2.70 m up to 6.60 m
Concrete pressure	PW 60 cm = up to 120 kN/m <sup>2</sup> PW 120 = up to 80 kN/m <sup>2</sup>
Form lining	Plastic-coated plywood (connected from the back)
Relevant standards	Complies with EN 1993
Stacking connection	Via 2 stacking bolts per frame (M16 x 100)



◀ Column formwork assembled with the concrete pouring platform in one unit for safe concrete placement. The platform consists of a galvanized steel construction with a corrugated sheet metal base plate.



► Complete column assemblies can be moved in a single crane lift – all add-on parts remain safely attached to formwork elements



► Superb concrete finish and more re-uses thanks to the plastic-coated form plywood